

GILDEMEISTER

GMX 300 linear

Stock no. :1022-2284

MACHINE-DATA

Machinetype : CNC Turning- and Milling Center
 Make : GildeMeister
 Type : GMX 300 linear
 Year : 2004
 Control type : CNC
 Control : SIEMENS 840 D
 Storage location : Monheim (Germany)
 Origin : Germany
 Delivery time : Immediately
 Quotation : Ex warehouse, loaded on truck
 Price : on request



TECHNICAL DATA

turning diameter	640 mm
turning length	1585 mm
control	SIEMENS 840 D
swing diameter	640 mm
spindle distance	1930 mm
slide I - cross travel	(X1) 550 mm
slide I - longitudinal travel	(Z1) 1585 mm
y-travel	(Y1) 220 mm
b-axis	(B1) 240° deg.
slide II - cross travel	(X2) 225 mm
slide II - longitudinal travel	(Z2) 1400 mm
Travel subspindle	(Z3) 1500 mm
spindle bore	79 mm
main spindle speeds:	5000 1/min.
Subspindle spindle speeds	5000 1/min.
main drive motor	(40/100% ED) 35/25 kW
rapid traverse	(X1/Y/Z1) 40/24/70 m/min
rapid traverse	(X2/Z2) 24/40 m/min
milling head speed	12000 U/min

Technical details and information subject to amendments and errors.



GILDEMEISTER

GMX 300 linear

Stock no. :1022-2284

milling spindle drive	(40/100% ED) 22/13,2 kW
dimensions of machine	6,7 x 3,7 x 3,1 m
total power requirement	100 kVA
weight of the machine ca.	24 t

TECHNICAL DESCRIPTION

First put into operation February 2005

Working hours February 2024:

- Machine on: 64.333 h
- Program-cycle: 41.420 h
- Spindle-hours: 32.272 h

- * Main and subspindle, 2 x C-axis
- * 3-jaw power chuck RÖHM KFD-HS 250/3 for mainspindle
- * 3-jaw power chuck RÖHM KFD-HS 250/3 for subspindle
- * CNC control SIEMENS Sinumerik 840 D powerline
- * Turning and milling unit (HSK-A63), B-axis, Y-axis
- * 120-station tool changer
- * 12-position turret (bottom), all positions driven (10.7 kW, 4000 rpm)
- * Cooling unit
- * Coolant filter system 980 L
- * Chip conveyor
- * Oilmist extractor

Optionally, a short bar loader, make Breuning ILS, passage 90 mm can be offered for EUR 5.500,-

VIDEO-LINKS

Video No.1 : <https://www.youtube.com/embed/rbFfWnlmQT8>

WEB-LINK

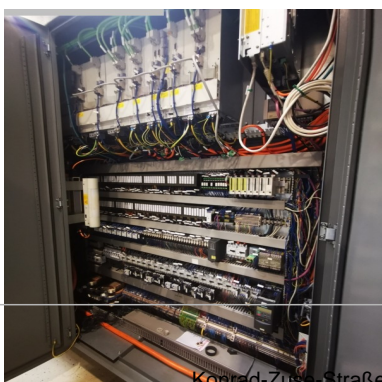
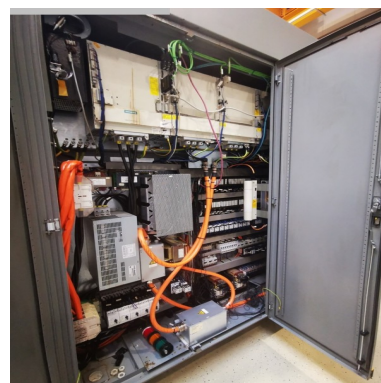
<http://mhp.logotech.de/hpm/v7/Datenblatt/datenblatt.php?machineno=1022-2284>



GILDEMEISTER

GMX 300 linear

Stock no. :1022-2284



Technical details and information subject to amendments and errors.