



BURKHARDT + WEBER

MCR 900 HVC

Stock no. :1022-2411

MACHINE-DATA

Machinetype : Machining Center - Universal
 Make : BURKHARDT + WEBER
 Type : MCR 900 HVC
 Year : 2011
 Control type : CNC
 Control :
 Storage location : Monheim (Germany)
 Origin : Germany
 Delivery time : Immediately
 Quotation : Ex warehouse, loaded on truck
 Price : on request



TECHNICAL DATA

x-travel	1600 mm
y-travel	1250 mm
z-travel	1600 mm
B-axis (table)	360.000 x 0,001° deg
milling-head swivable +/-	(HV) 360.000° deg
pallet size:	1000 x 800 mm
table load	3000 kg
tool taper	SK 50-B
spindle turning speed range	max. 8000 U/min
transmission ratio	2
spindle drive	(100/40 % ED) 37/50 kW
feeds x/y/z -stepless	30000 mm/min
total power requirement	100 kVA
dimensions of the machine ca.	11555 x 7998 x 5050 mm

TECHNICAL DESCRIPTION

Universal machining center 5 axes simultaneously
Original purchase price: EUR 1.295.000,-



BURKHARDT + WEBER

MCR 900 HVC

Stock no. :1022-2411

First machine installation in September 2011.

A geometry measurement report (dated 30. August 2025) is available.

Equipment:

CNC-control Siemens 840D Solution Line

Separate handheld control unit, wired, Siemens HT-2

2-station pallet changer with safety light barrier

110-position tool changer (max. tool length 600 mm) with 2nd Siemens 840 D control panel

Tool taper cleaning system

Special cabin with oil mist extraction system

Coolant tank 3.300 liters, pump pressure 4 bar/50 bar (Q1/Q2)

Chip conveyor

Workpiece measuring probe

Manual books

Spare part: New ball screw.

Note:

The machine will be sold without tool holders, tools, and clamping devices.

VIDEO-LINKS

Video No.1 : <https://www.youtube.com/embed/0XFXIUn7NP4>

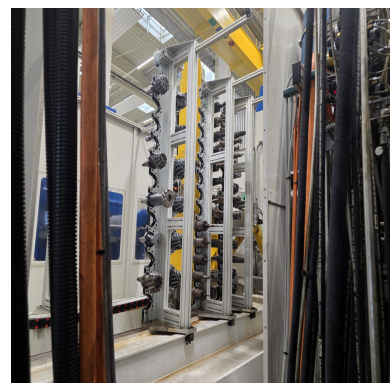
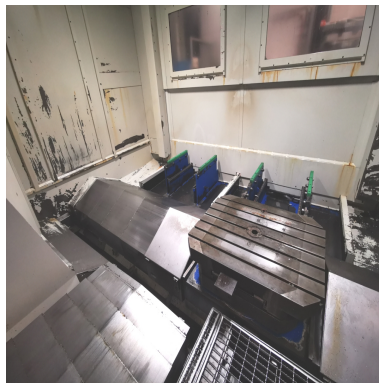
WEB-LINK

<http://mhp.logotech.de/hpm/v7/Datenblatt/datenblatt.php?machineno=1022-2411>

BURKHARDT + WEBER

MCR 900 HVC

Stock no. :1022-2411



Technical details and information subject to amendments and errors.